

Harnessing the Power of Mobile Computing for Advanced Environmental Measurements

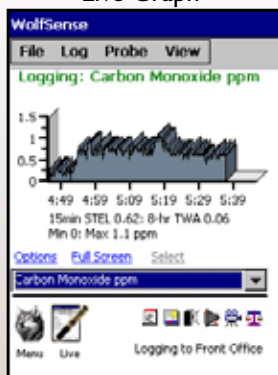
✓ Surveyed

✓ Documented

✓ Reported



Live Graph



Example Screens

Live Display

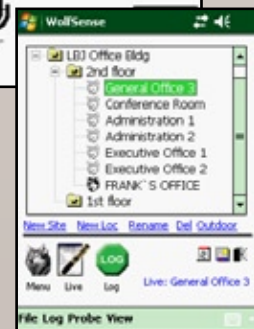
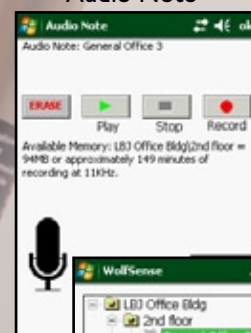
WolfSense
File Log Probe View

TVOC	186 ppb
Carbon Dioxide	593 ppm
Carbon Monoxide	1.2 ppm
Hydrogen Sulfide	0.49 ppm
ΔP	-0.3 Pa
Barometric	1013.2 mbar
Temp1	21.0 °C
Temp2	22.3 °C
ΔT	1.3 °C

Menu Live: Plant\Front Office



Audio Note



Site/Location Description



ADVANCEDSENSE™

Environmental Test Meter

The AdvancedSense meter's embedded computer runs GrayWolf's highly advanced, very user-friendly application software. Display, data-log and annotate (on-site) a broad range of environmental parameters with a single, rugged, cutting edge instrument.

- Simultaneously connect 1 or 2 GrayWolf DirectSense® probes (plus a particulate monitor) with up to 6 sensors per probe (even more probes with Y-adapters)
- Available sensors; auto-zeroing differential pressure, barometric pressure, VOCs (PID), CO₂ (NDIR), %RH, °C / °F, CO, O₃, NH₃, H₂S, NO, NO₂, SO₂, Cl₂, EtO, HCN, HF, HCl and other parameters
- 2 thermocouple sockets (standard) for air, liquid, surface temperature measurement (solo or differential)
- Backlit touch screen with virtual keyboard (for text input such as descriptive data file names)
- Feature rich with productivity tools that make your environmental surveys more efficient, more detailed, more reliable:
 - Voice notes with optional audio to text transcription
 - Optional borescope or camera for photo and video notes
 - Text notes, field (Word template) notes, event notes and more in-situ
 - Notes auto-attach to data files
 - On-board educational info, application docs, sensor tips and more
 - Data transfer and reporting software (included) for trend graphs, comparative tables, note management and much more



GRAYWOLF®
SENSING SOLUTIONS
PH. 1-203-402-0477
FAX: 1-203-402-0478

EMAIL:
SALESTEAM@GRAYWOLFSENSING.COM

WEBSITE:
WWW.GRAYWOLFSENSING.COM



ADVANCEDSENSE™

Environmental Test Meter

SPECIFICATIONS:

(for additional sensor/probe specifications refer to GrayWolf's DirectSense®, pitot tube and thermocouple brochures)

- General:**
- Dimensions:** 96.0mm (3.8in.) w. x 177mm (7.0in.) h. x 47.0mm (1.8in.) d.
 - Construction:** Rugged polycarbonate plastic with rubberized side grips. IP64
 - Weight:** 700gr (1lb 8.5oz.) Add 50gr (1.5oz.) for auto-zeroing ΔP option
 - Screen Size:** 785mm (3.5in.) QVGA 240 x 320 TFT color touch screen with backlight
 - Memory:** 2GB internal flash memory (1 million+ sets of readings)
Option for 4GB (for extended video/audio/photo notes)
 - Audio:** Integral electret microphone (on front) and 4 ohm speaker (on back)
 - Mounting:** ¼" - 20 thread (on back) for belt clip, tripod, etc.
 - Operating Range:** -10°C to 50°C (-15°F to 125°F), 0 to 100 %RH non-condensing

- Connectors:**
- 2 x Lemo 8 pin for GrayWolf DirectSense probes (the AdvancedSense will support up to 4 x DirectSense probes with Y-adapters)
 - 1 x Lemo 7 pin for particulate, 3rd party meters or RH-AS2 %RH, °C / °F probe
 - 2 x sub-mini type K thermocouple temperature sockets. Range -80 to 1100°C (-110 to 2010°F)
 - 1 x Lemo socket for borescope or camera
 - 1 x USB mini B socket. 1m USB B to USB A download cable supplied as standard
 - 1 x 9V power adapter socket
- Optional; 2 x 4mm posts for differential pressure tubing**

- Power:**
- Battery:** 4250 mAh Lithium Ion rechargeable
 - Battery Life:** 24+ hours typical for new battery with backlight off (and probes self-powering)
The AdvancedSense can power DirectSense probes. Battery life will vary when powering probes or pressure sensors
 - Recharge time:** 4 hours typical. LED displays charging/fully charged status
 - Power supply:** 100/240VAC, 50-60Hz external charger. Specify local plug.

Optional Built-in Sensors:

Pressure Sensor	Differential Pressure (DP-701L)	Differential Pressure (DP-702LH)	Barometric Pressure (BP-101)
Range/Resolution	+/-2000.0Pa, +/-8.000 in H ₂ O, +/-200.00 mmH ₂ O, +/-20.000 mbar, +/-14.000 mmHg	+/-10,000.0 Pa, +/-40.000 in. H ₂ O, +/-1000.00 mmH ₂ O, +/-100.000 mbar, +/-70.000 mmHg	600.0 to 825.0 mmHg, 800.0 to 1100.0 mBar, 23.50 to 32.50 inHg, 0.80 to 1.10 atm

ΔP is auto-zeroing (every 2 minutes, but user adjustable to 5 min. or OFF). The model DP-702LH is also auto-ranging; dual integrated sensors (250Pa & 10KPa) enable exceptional low-end sensitivity/accuracy, yet a very wide measurement range for broad ΔP and airspeed (pitot tube) applications.

GrayWolf Software is 21 CFR Part 11 Compliant

All specifications are subject to change without further notice



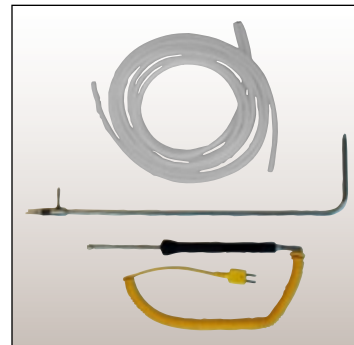
WolfSense PC data transfer and analysis software supplied as standard

MEASURE SMART

REPORT EFFICIENTLY



▲ ACC-BS1 1m (39in.) borescope with LEDs connects to AdvancedSense for display and photo/video note-taking. Alternatively, connect a camera (or an external data storage device).



PCC-AS01 pouch with neck strap and belt loop for hands-free surveys



▲ PCC-10A Hardshell Security case holds AdvancedSense, DirectSense probes & accessories (borescope, etc). Smaller/larger cases also available.

Audio-to-Text transcription software, Advanced Reporting Software, Calibration kits and other accessories are available from GrayWolf.



GRAYWOLF SENSING SOLUTIONS
 6 RESEARCH DRIVE
 SHELTON, CT 06484 USA
 PH. (1)203-402-0477
 800-218-7997
 FAX: (1)203-402-0478

EMAIL: SALESTEAM@GRAYWOLFSENSING.COM

WWW.GRAYWOLFSENSING.COM

GRAYWOLF SENSING SOLUTIONS
 TUAMGRANEY INDUSTRIAL ESTATE,
 UNIT 8
 TUAMGRANEY, CO CLARE, IRELAND
 PH. (353)61921736
 FAX: (353)61921528