

Harnessing the Power of Mobile Computing for Advanced Environmental Measurements

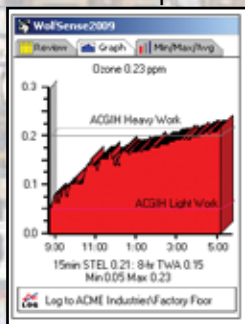
✓ Surveyed

✓ Documented

✓ Reported



Live Graph



Example Screens

Live Display

Parameter	Value
TVOC	269 ppb
Carbon Dioxide	550 ppm
Carbon Monoxide	0.6 ppm
Ozone	0.33 ppm
Temperature	21.1 °C
Relative Humidity	19.4 %RH
Chlorine	0.17 ppm
Nitrogen Dioxide	0.56 ppm
Sulfur Dioxide	0.4 ppm
Concentration	0.78 µg/m3
Barometric	763.1 mmHg

On-Site Text Note

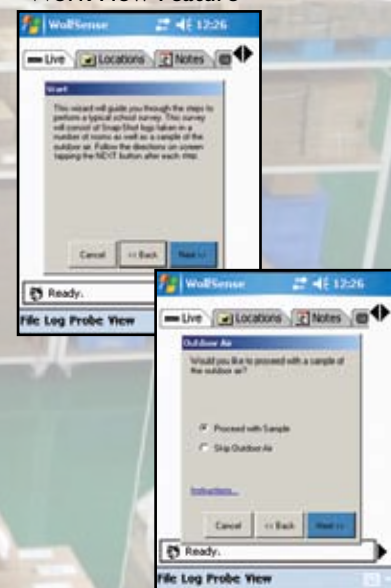
Text Note: General Office

There have been complaints from the primary occupant of this office over the past few months of stuffiness and smells. This office was partitioned 4 months ago, roughly half of the space was

Cancel OK



Work Flow Feature



WOLFPACK™

Modular Area Monitor

The WolfPack's embedded WinCE® computer runs GrayWolf's WolfSense® 2009 application software for displaying, documenting, and logging key parameters. The WolfPack is an Area Monitor for Indoor Air Quality and other environmental air monitoring applications.

- Modular system: probes may also be used with mobile PCs or AdvancedSense™ meters for walk-thrus/spot-checks.
- Plug in up to 3 GrayWolf DirectSense® probes (plus a particle monitor); up to six sensors per probe
- Choice of PID for VOCs, NDIR CO₂, %RH, °C/°F and from 20 specific electrochemical gas sensors; CO, O₃, NH₃, H₂S, NO₂, NO, SO₂, Cl₂, HCl, EtO, HCN, H₂, HF, AsH₃, F₂ or others
- Monitor up to 20 sensors, 30 readings simultaneously
- Optional auto-zeroing differential pressure and/or barometric pressure
- On-board tools: video help, parameter details, sensor info, text & audio notes and much more...
- Workflow feature handholds users thru trend log set-up, surveys
- WolfSense PC desktop data transfer and reporting software included
- Optional WolfSense Advanced Report Generator software for automated professional reports



GRAYWOLF®
SENSING SOLUTIONS
PH. 1-203-402-0477
FAX: 1-203-402-0478

EMAIL:
SALESTEAM@GRAYWOLFSENSING.COM

WEBSITE:
WWW.GRAYWOLFSENSING.COM



WOLFPACK™

Modular Area Monitor

SPECIFICATIONS:

(for additional sensor/probe specifications please refer to GrayWolf's DirectSense® brochures)

Dimensions:

Without handle: 9.84in. (25cm) w. x 10in. (25.5cm) h. x 5.1in. (13cm) d.
 With handle: 11in. (28cm) w. x 16in. (40.9cm) h. x 5.1in. (13cm) d.
 Overall Height with probe(s) fitted: 18in. (46cm)
 Weight (without probes): 11lb. 5 oz. (5kg)
 Probe Weight (without probe handle): ~8 oz.
 PCC-16 Hardshell Case: 19.7in. (50cm) w. x 24.6in. (62.5cm) h. x 11.7in. (29.7cm) d.

Power:

Battery: Lead Acid (rechargeable)
 Battery Life: 15 hours typical with backlight off, fan on
 25 hours typical with backlight off, fan off
 Recharge time (100/250VAC, 50-60Hz internal charger): 5 hours

Connectors:

3 x Lemo 8 pin for GrayWolf probes
 1 x Lemo 6 pin for particulate, 3rd party meters
 1 x mini USB - connect using supplied mini USB cable (ACC-USB-MINI)
 1 x IEC 320 universal socket for power. 1.5m cable with local plug supplied

Miscellaneous:

Operating Range: 0°C to 50°C (32°F to 122°F), 0 to 90% RH
 Screen Size: 3.5in. QVGA 240x320 TFT color touch screen
 Memory 2GB available (internal SD-Card); 1 million+ sets of readings
 Adjustable handle - adjust to any angle from 180° to 30°
 Locking clamps fitted to enable unit to be secured
 Wall-mountable if required
 GrayWolf Software is 21 CFR Part 11 Compliant
 All specifications are subject to change without further notice

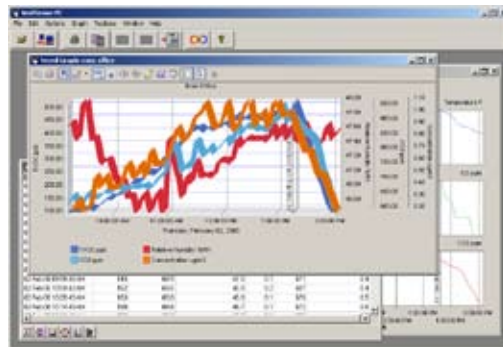
Optional Built-in Sensors:

	Differential Pressure (DP-701L)	Barometric Pressure (BP-101)
Range*	+/-2000Pa, +/-8 in H ₂ O, +/-200 mmH ₂ O, +/-20 mbar, +/-14 mmHg	600 to 825 mmHg, 800 to 1100mBar, 23.50 to 32.50 in Hg, 0.80 to 1.10atm
Resolution	0.1 Pa, 0.001 in. H ₂ O, 0.01 mmH ₂ O, 0.001 mbar, 0.001 mmHg	0.1mmHg, 0.1mBar, 0.01 in Hg, 0.01atm
Accuracy	+/-1% rdg +/-2 counts	+/-0.1% rdg

Differential Pressure is auto-zeroing (every 2 minutes by default but zeroing frequency is user adjustable)

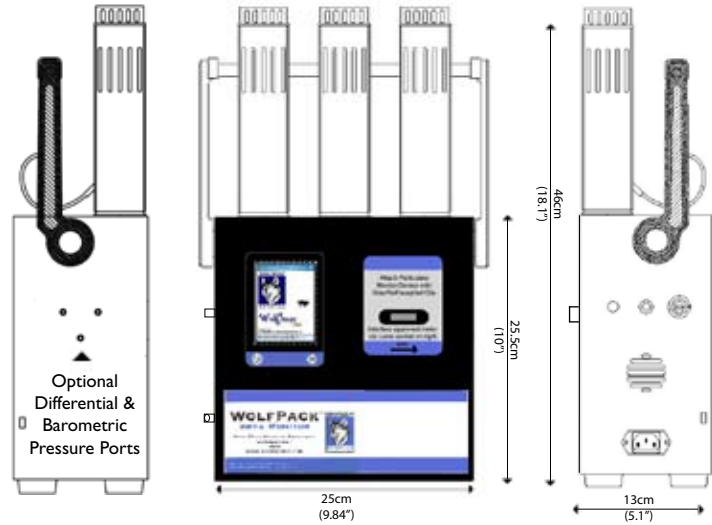
*A wider ΔP range, +/- 10,000 Pa (+/-40 in H₂O) is available on special order (DP-701H)

WolfSense PC data transfer and analysis software supplied as standard



MEASURE SMART

REPORT EFFICIENTLY



▲ WolfPack shown with PC-GW6 6-channel Particle Counter (GrayWolf PC-3016)

Probes can interchange with AdvancedSense meters and mobile PCs



▲ WolfPack shown with PM-205 Particulate Monitor (Thermo pDR-1500)



▲ PCC-16 Hardshell Carrying Case with handle, wheels and storage for WolfPack, probes, mobile PC and accessories. Dimensions: 62.5cm x 50.0cm x 30.0cm (24.6" x 19.7" x 11.7")



Calibration kits, Advanced Reporting Software, mobile PCs and other accessories are available from GrayWolf.



GRAYWOLF SENSING SOLUTIONS
 6 RESEARCH DRIVE
 SHELTON, CT 06484 USA
 PH. (1)203-402-0477
 800-218-7997
 FAX: (1)203-402-0478

EMAIL: SALESTEAM@GRAYWOLFSENSING.COM

WWW.GRAYWOLFSENSING.COM

GRAYWOLF SENSING SOLUTIONS
 TUAMGRANEY INDUSTRIAL ESTATE,
 UNIT 8
 TUAMGRANEY, CO CLARE, IRELAND
 PH. (353)61921736
 FAX: (353)61921528