



Rental Program

Rent from the Manufacturer (with Up-To-Date **Factory** Calibrations and significant Rebates toward equipment purchase)
1-800-218-7997

DIRECT SENSE® IAQ
 Indoor Air Quality Meter

ADVANCED SENSE™ IAQ
 Indoor Air Quality Meter

Indoor Air Quality Monitoring Kits

DirectSense Weekly Rate: **\$385** DirectSense Monthly Rate: **\$995**
 AdvancedSense Weekly Rate: **\$485** AdvancedSense Monthly Rate: **\$1,295**

Includes:

IQ-410 IAQ Probe for Carbon Dioxide, Carbon Monoxide, Temperature and %RH measurement (also dewpoint, wetbulb temperature, specific humidity, absolute humidity, and humidity ratio)

--plus--

PH-12S Mobile Windows PocketPC™ computer --OR-- AdvancedSense datalogger

WolfSense Application software

WolfSense PC data analysis and report generation software

WolfSense ARG Advanced Report Generation software

PCC-PH01 or **PCC-AS01** case with belt clip and detachable neck strap

PCC-05IQ probe pouch with shoulder strap for hands-free, walk-through surveys

PCC-10 Hard-shell Security case for in-situ monitoring



PCC-10P



PH-12S Pocket PC



AdvancedSense

IAQ PLUS Indoor Air Quality Monitoring Kits

Same kit as above but includes IQ-610 probe with ppb PID sensor for VOC measurement in place of IQ-410
 The IQ-610* also measures CO₂, CO, %RH, Temperature, and Dewpoint

DirectSense Weekly Rate: **\$495** DirectSense Monthly Rate: **\$1,295**
 AdvancedSense Weekly Rate: **\$595** AdvancedSense Monthly Rate: **\$1,595**

OPTIONS

TG-501* Gas Sensor Probe (not including gas sensors)

NO₂, SO₂, NO, NH₃, O₂, H₂S, CO or O₃ (each)

Cl₂, EtO or H₂S/CO combo (each)

*One additional electrochemical gas sensor may be installed in the IQ-610 probe and up to 5 may be installed into the TG-501 probe. Specific sensor availability is limited, inquire regarding availability.

WolfPack Modular Area Monitor added (PCC-16 case sub'd)

RK-FP30 Formaldehyde meter (test tablets must be purchased separately)

AS-202-A Telescoping Hotwire Air Velocity Probe

PM-205-KIT Thermo Particle Concentration Meter

w/PC interface card/cable, dual cyclones, soft-shell case

PC-GW6A-KIT 6-channel Particle Counter displays counts and µg/m³ for 6 size ranges. Comes with PC interface card/cable, hardshell case

PC-GW6-RHCF %RH and temperature probe for stand-alone PC-GW6 use

VentCal Software for Outdoor Air Ventilation Rate Calculations

ACC-CAM-P1 Digital camera (AdvancedSense/WP) for photo/video notes. Connects via included AD-L7F-USB cable

CA-HD2** CO/CO₂/VOC/Gas Calibration hood

ACC-REG1 regulator & 2 cylinder hard-shell case

****(No gases included; portable reference gas cylinders are available for sale, not rental)**

WEEKLY

MONTHLY

\$200 \$475

\$125 \$200

\$175 \$275

\$250 \$700

\$125 \$395

\$105 \$295

\$595 \$1650

\$425 \$1125

\$35 \$95

\$25 \$70

\$50 \$150

\$10 \$25

\$15 \$45

DIRECTSENSE LEED 3.2 Kit

Same kit as DS IAQ Plus detailed above but also includes RK-FP30 Formaldehyde meter and PM-205 KIT Particulate meter.

DirectSense Weekly Rate: **\$1,149** DirectSense Monthly Rate: **\$3,295**
 AdvancedSense Weekly Rate: **\$1,249** AdvancedSense Monthly Rate: **\$3,595**



PM-205



PC-GW6A



RK-FP30



WolfPack



AS-202A

GrayWolf Sensing Solutions

advanced environmental instrumentation

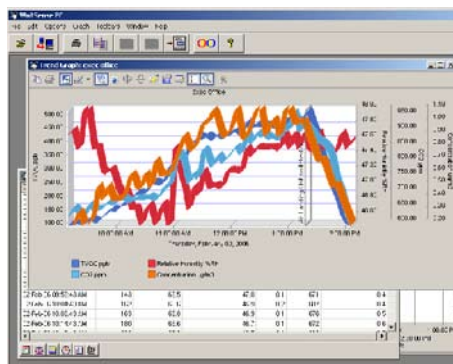
6 Research Dr., Shelton, CT 06484 USA Tel: (203) 402-0477 Fax: (203) 402-0478

e-mail: Salesteam@GrayWolfSensing.com

www.GrayWolfSensing.com

August 2011

Rental Program



WolfSense PC data transfer software



WolfSense ARG report

WolfSense PC software allows logged data to be down-loaded to your PC for review, graph generation, cut & paste reporting and/or simple export to Excel

WolfSense ARG Advanced Report Generator: IAQ Edition software makes comprehensive IAQ report generation easy and efficient.

A Template Design Wizard walks the user through report set-up:

- Define how to display measured data (CO₂, CO, %RH, Temperature, VOCs, etc).
- Select from a list of government and industry guidelines to include for each parameter.
- Choose from and edit canned text blocks with general IAQ background info.
- Automatically insert notes taken in the field on the mobile PC; text, drawings, photos.
- Create and insert graphs with comments, alarm/guideline lines.
- Add equipment descriptions/specs/photos, probe calibration info, company information/logos and much more



REBATE UPON PURCHASE

Want to buy the equipment that you've rented? Purchase the kit that's been shipped to you and apply 75% of the rental price that you paid (up to a maximum of 75% of the total purchase price) toward the purchase price. In some cases, dependent on the condition of the equipment shipped to you, a "demo/rental equipment discount" may also be available.

Want to send the kit back and order a brand new unit? As long as you order within 6 months from the date that you return your rental kit you can apply 35% of the rental price that you paid...(up to a maximum of 50% of the total purchase price) toward your purchase.

Security Deposit: Rentals may require a (refundable) security deposit (covering the value of the rental equipment), if appropriate credit terms have not been previously established and maintained with GrayWolf. Allow 10 business days from the time that you supply adequate credit references for a new open account to be set up.

GrayWolf Sensing Solutions cannot guarantee the availability of rental equipment. The quoted rental pricing is exclusively available to clients in the USA and Canada, and is subject to change. Contact your local distributor for rental pricing and availability in other countries.

GrayWolf Sensing Solutions

advanced environmental instrumentation

6 Research Dr., Shelton, CT 06484 USA Tel: (203) 402-0477 Fax: (203) 402-0478

e-mail: Salesteam@GrayWolfSensing.com

www.GrayWolfSensing.com